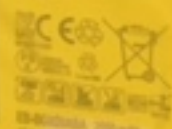






SAMSUNG

Model: SM-B1500EB
Capacity: 1500mAh
Voltage: 3.8V
Input: 5V/2A
Output: 5V/2A



© Samsung Electronics Co., Ltd. 2015

2015.04.09

RA2G409VS/---B



SAMSUNG

MADE IN CHINA / FABRIQUÉ EN CHINE

ENSAMBLADO EN CHINA / MONTADO NA CHINA

수입사 : 삼성 / 代理 : DONGGUAN ITM ELECTRONICS Co., Ltd.

3.85 V LI-ION BATTERY 3.85 V LI-ION BATTERIE 9.82 Wh

3.85 V LI-ION BATERIA 3.85 V LI-ION BATERIA 9.82 Wh

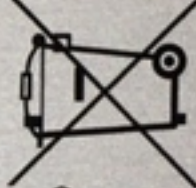
CHARGE VOLTAGE : 4.4 V 충전전압 : 4.4 V

전자 3.85 V LI-ION BATTERY 9.82 Wh

定時 3.85 V 2550 mAh 9.82 Wh 充電電圧 : 4.4 V

A/S 문의 전화번호 : 1588-3386

1ICPA46596



ZH192205-14002



SAMSUNG
ELECTRONICS
JAPAN Co., Ltd.



Li-Ion 00



NOM

EB-BG920ABA 2550 mAh

제조년월:

SAMSUNG TSD1
- PGF394595HT EA03T806
+ C1WFFM608-77-184



CAUTION!
LITHIUM BATTERY
**DO NOT LOAD OR TRANSPORT
PACKAGE IF DAMAGED**
For more information, call 001-281-443-3222

1290



S. G. Edge +
150.



ES-B02MBA 2100mAh 3.82V
SAMSUNG
SAMSUNG

ES-B02MBA 2100mAh 3.82V
SAMSUNG
SAMSUNG

ES-B02MBA 2100mAh 3.82V
SAMSUNG
SAMSUNG

ES-B02MBA 2100mAh 3.82V
SAMSUNG
SAMSUNG

ES-B02MBA 2100mAh 3.82V
SAMSUNG
SAMSUNG

ES-B02MBA 2100mAh 3.82V
SAMSUNG
ES-B02MBA 2100mAh 3.82V
SAMSUNG

ES-B02MBA 2100mAh 3.82V
SAMSUNG
ES-B02MBA 2100mAh 3.82V
SAMSUNG

ES-B02MBA 2100mAh 3.82V
SAMSUNG
ES-B02MBA 2100mAh 3.82V
SAMSUNG

2015. 12. 18
AA1GC18AS
/--B

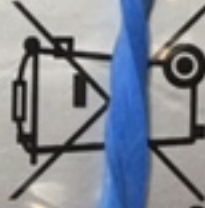


SAMSUNG

MADE IN KOREA / FABRIQUÉ EN CORÉE
ENSAMBLADO EN COREA / MONTADO NA COREIA
제조사 : 아이티엠반도체

Secondary Li-Ion Battery / 제품명 : 전자 / 리튬이온2차전지
Nominal Voltage / 공칭전압 / 定格 : 3.65 V ☰
Charge Voltage / 충전전압 / 充電電圧 : 4.4 V ☰
AS 문의 전화번호 : 1588-3366 3000 mAh 11.55 Wh
110P5401/02

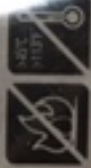
RoHS



PS
E

SAMSUNG
ELECTRONICS
JAPAN Co., Ltd.

Hon'00



EB-BN920ABA

제조년월 :

SIN :

NOTE 'S'
~~210~~ 180



CAUTION!
DO NOT LOAD OR UNLOAD THIS PACKAGE IF DAMAGED



Total
100 Batteries

S. 7. Edge
~~210.~~

165



30
S/--E



NG

VIETNAM
SEMBLE AU VIETNAM
4000 VO VIETNAM
SOVIETNAM CO., LTD.

224H2X1 / 48888 : 2X1
3.85V ±
U.E. : 4.4V ±
400 mAh 13.06 Wh



EB-00935ABA
REEL# :
S.N. :